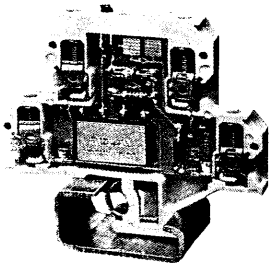
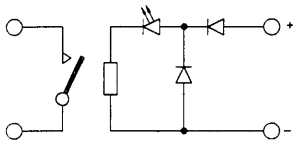


6R24D - 1A
24V 1 Normally Open Reed

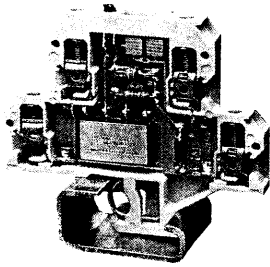


See Dimensional Drawing 38

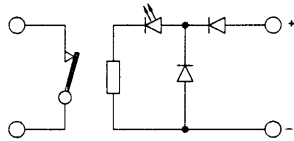


24V d.c.
20V d.c.
30V d.c.
3.0V d.c.
10mA
240mW
Red
Rhodium/Ruthenium
200V d.c./pk a.c.
500mA
10W
150mΩ

6R24D - 1B
24V 1 Normally Closed Reed

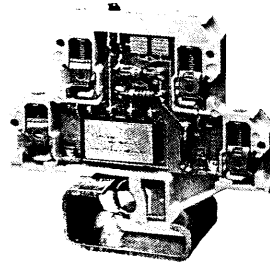


See Dimensional Drawing 38

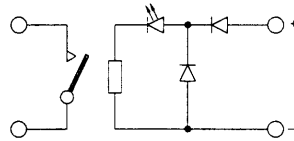


24V d.c.
20V d.c.
30V d.c.
3.0V d.c.
8mA
192mW
Green
Rhodium/Ruthenium
200V d.c./pk a.c.
500mA
10W
150mΩ

6R48D - 1A
48V 1 Normally Open Reed

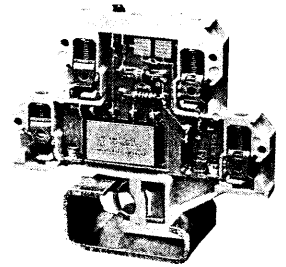


See Dimensional Drawing 38

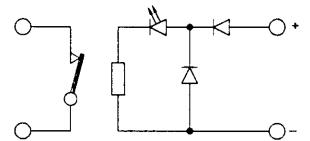


48V d.c.
40V d.c.
60V d.c.
6.0V d.c.
8mA
384mW
Red
Rhodium/Ruthenium
200V d.c./pk a.c.
500mA
10W
150mΩ

6R48D - 1B
48V 1 Normally Closed Reed



See Dimensional Drawing 38



48V d.c.
40V d.c.
60V d.c.
6.0V d.c.
8mA
384mW
Green
Rhodium/Ruthenium
200V d.c./pk a.c.
500mA
10W
150mΩ

ge
age
tage
ent
er
tage
rent
wer
ie
Voltage
Voltage
oad
Contact
Contact
densing)
Range
Solid
Flexible
gth
TS32
TS35
nting Rail
nd Plate

1.5ms max.
1.5ms max.
10 x 10⁶
500V d.c./pk a.c.

>10¹⁰Ω
>10¹⁰Ω

6mm
<80% RH
0 to 55°C
0.5 - 4.0mm²
0.5 - 2.5mm²

7mm

Type	Cat. No.
6R24D-1A/32	980000
6R24D-1A/35	980001

TS32/35 See page 22-1
AP 068756

1.5ms max.
1.5ms max.
10 x 10⁶
500V d.c./pk a.c.

>10¹⁰Ω
>10¹⁰Ω

6mm
<80% RH
0 to 55°C
0.5 - 4.0mm²
0.5 - 2.5mm²

7mm

Type	Cat. No.
6R24D-1B/32	980002
6R24D-1B/35	980003

TS32/35 See page 22-1
AP 068756

1.5ms max.
1.5ms max.
10 x 10⁶
500V d.c./pk a.c.

>10¹⁰Ω
>10¹⁰Ω

6mm
<80% RH
0 to 55°C
0.5 - 4.0mm²
0.5 - 2.5mm²

7mm

Type	Cat. No.
6R48D-1A/32	980004
6R48D-1A/35	980005

TS32/35 See page 22-1
AP 068756

1.5ms max.
1.5ms max.
10 x 10⁶
500V d.c./pk a.c.

>10¹⁰Ω
>10¹⁰Ω

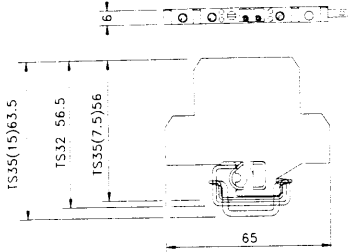
6mm
<80% RH
0 to 55°C
0.5 - 4.0mm²
0.5 - 2.5mm²

7mm

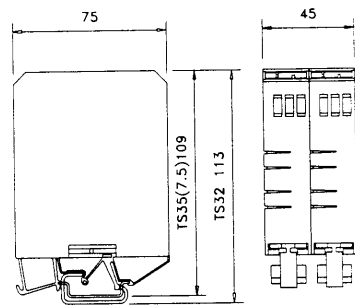
Type	Cat. No.
6R48D-1B/32	980006
6R48D-1B/35	980007

TS32/35 See page 22-1
AP 068756

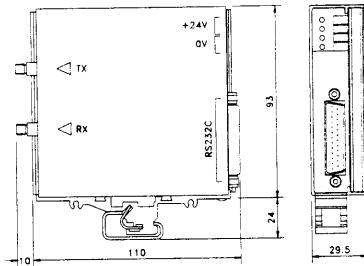
Dimensional Drawings (All dimensions in mm)



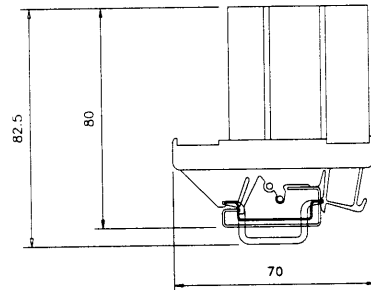
Drawing 31



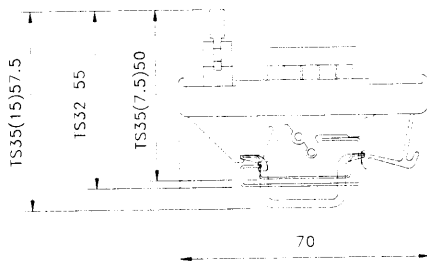
Drawing 32



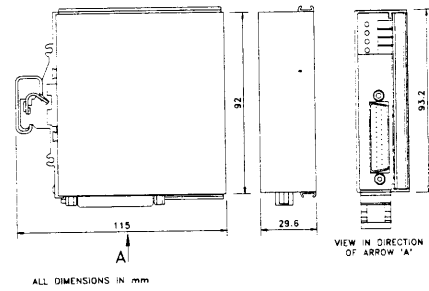
Drawing 33



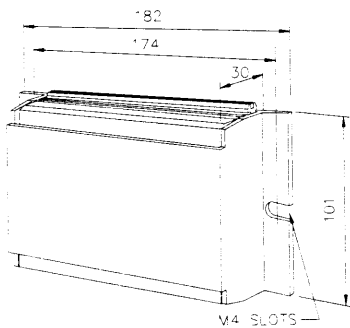
Drawing 34



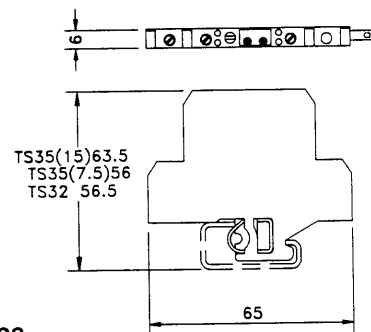
Drawing 35



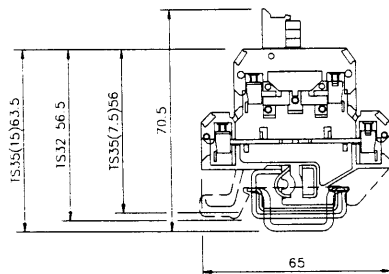
Drawing 36



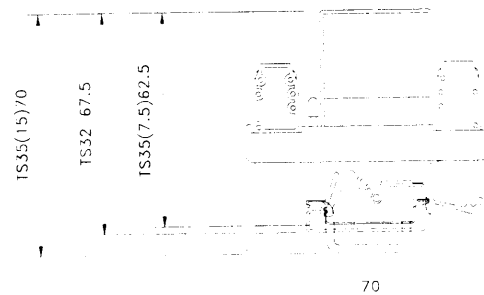
Drawing 37



Drawing 38



Drawing 39



Drawing 40